

## K5-52

### TRUCK-MOUNTED CONCRETE BOOM PUMP

**Placing Boom  
Pumping Unit**

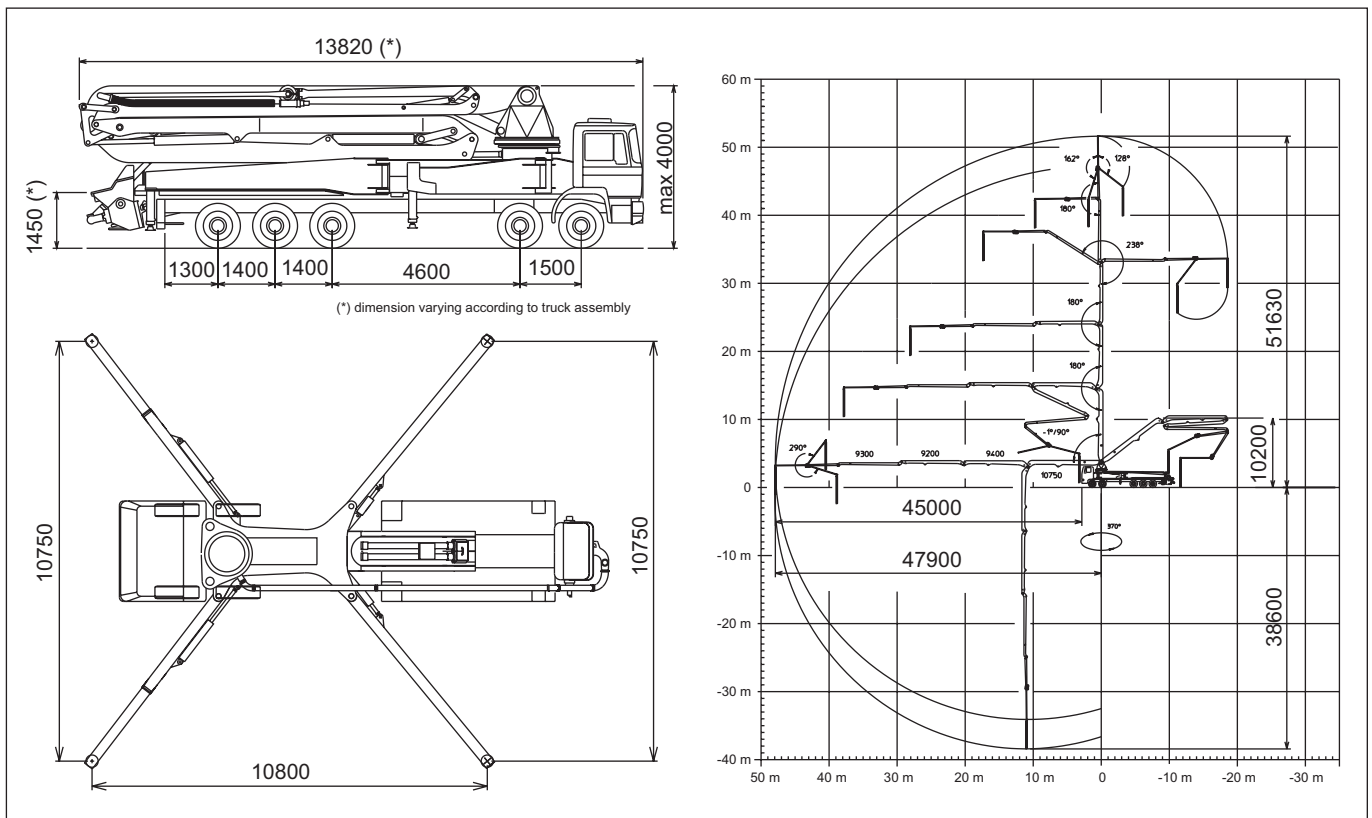
B5RZ 52/48  
HPG 1808/1113 IF  
PA 1506/909 F8

**Driven by  
Chassis**

PTO  
5 axle



### Dimensions



# K5-52

## Main features

- Advantageous assembling on standard 5 axle chassis
- Self-supporting frame - torsion free FEM designed
- Front outriggers "X" style for a quick set-up and easy pump placement in narrow areas
- Outriggers fully hydraulic controlled on both machine sides
- Placing boom B5RZ 52/48, 6 sections, pipeline diameter 125 mm, "R-Zed" folding system
- "Load Sensing" proportional boom control allowing the operator to control more placing boom sections simultaneously
- The "BFC" Best-Flex Cifa supporting system allowing just one man to change delivery pipeline easily, quick and safety.
- Concrete flow rate regulator
- HPG-IF pumping unit with closed circuit and reversal flow: superb performances, high pressures and output, easy and reduced maintenance.
- Safety device on opening inspection hatch

## Standard equipment

- Radiocontrol proportional system with two speed for the boom, frequency synthesizer, 8 position key and concrete flow rate regulator.
- Proportional remote control for emergency with 8 position key, concrete flow rate regulator and 30 m cable
- Remote controlled vibrator on the concrete hopper grid.
- Centralized lubrication system for pumping unit.
- Automatic lubrication system for HPG 1808/1113 IF pumping pistons by hydraulic oil
- Additional manual lubrication system for pumping unit.
- Hard plastic outrigger support plates with relevant housing.
- Rear light on hopper
- Level feelers for the control of the stabilization
- Accessories for cleaning and pipes washing

## Optionals

- Concrete pipes at double thickness, in high resistant steel.
- High pressure water pump for cleaning.
- Air compressor for pipeline cleaning.
- Centralized lubrication system for placing boom.
- Air pipeline on placing boom.
- Hopper covering.
- Separate engine kit, for independent control of the mixer of pumping unit hopper, water pump and eventual emergency kit.

## TRUCK-MOUNTED CONCRETE BOOM PUMP

<b>Placing Boom Pumping Unit</b>	B5RZ 52/48 HPG 1808/1113 IF PA 1506/909 F8
<b>Driven by Chassis</b>	PTO 5 axle

## Pumping Unit Technical Data

MODEL		PA 1506/909 F8	HPG 1808/1113 IF
Max. theoretical output	<i>m<sup>3</sup>/h</i>	150/90	179/105
Max. pressure on concrete	<i>bar</i>	53/95	76/130
Max. numbers of cycles per minute	<i>nr.</i>	30/17	36/21
Concrete cylinders (diam. x stroke)	<i>mm</i>	230 x 2000	230 x 2000
Concrete hopper capacity	<i>l</i>	550	650
Hydraulic circuit		open	close

## Placing Boom Technical Data

MODEL	B5RZ 52/48	
Pipeline diameter	<i>mm</i>	125
Max. vertical reach	<i>m</i>	51,70
Max. horizontal distance	<i>m</i>	47,90
Min. unfolding height	<i>m</i>	10,20
Section number		6
1st section opening angle		-1°/90°
2nd section opening angle		180°
3rd section opening angle		180°
4th section opening angle		238°
5th section opening angle		180°
6th section opening angle		290°
Rotating angle		370°
End hose lenght	<i>m</i>	4

Technical data and characteristics subject to modifications.