

K41 XRZ

TRUCK-MOUNTED CONCRETE BOOM PUMP

Placing boom
Pumping unit

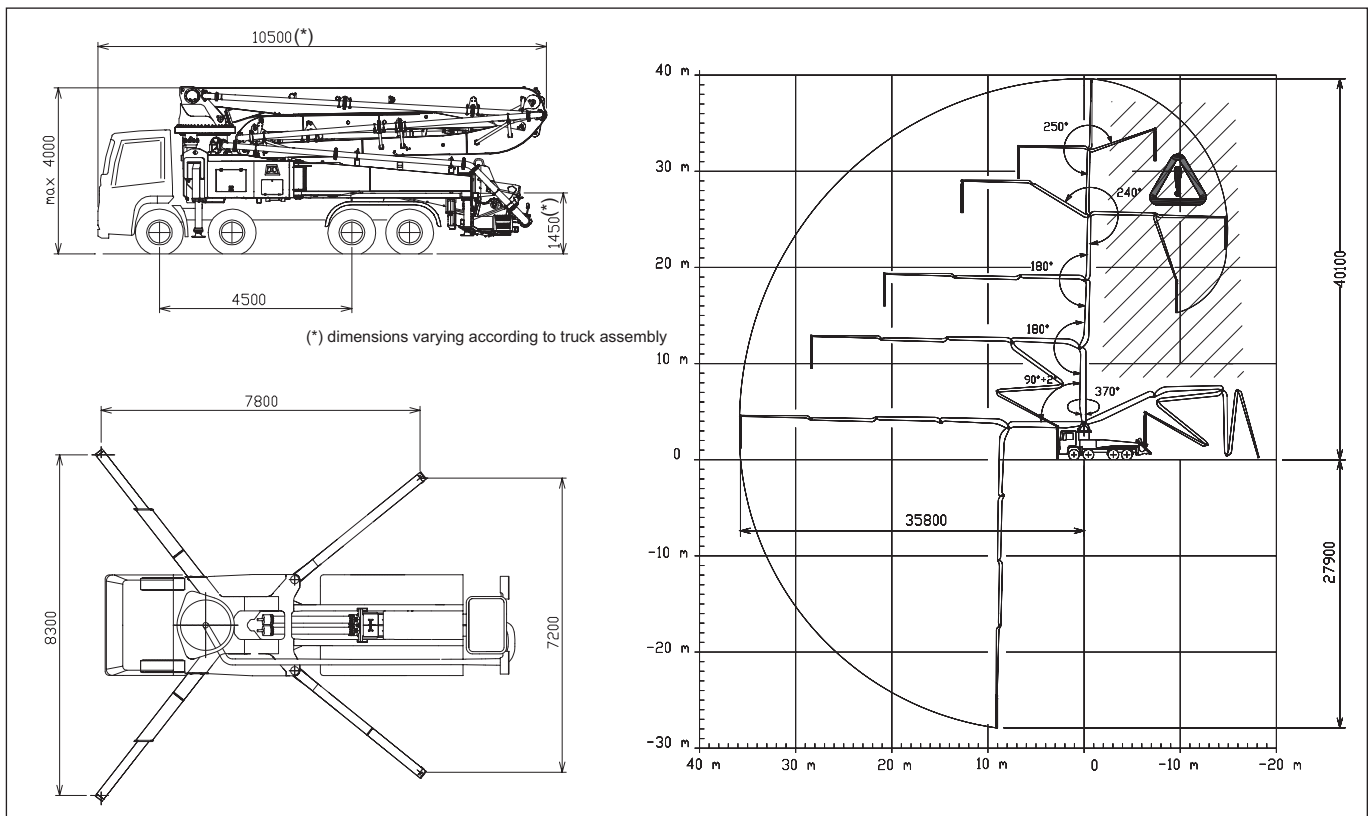
B5RZ 41/36
HPG 1808/1113IF8-IF9
PA 1206F8
PA 1506/909F8

Driven by
Chassis

PTO
3 - 4 axle



Dimensions



K41 XRZ

Main features

- Advantageous assembling on standard 3 or 4 axle chassis
- Self-supporting frame, torsion free, FEM designed
- Placing boom B5RZ 41/36, 5 sections, pipeline diameter 125 mm, "RZ" folding system
- Fully hydraulic outrigger controls on both sides of the truck
- Front "X" style diagonal outriggers with sequence controlled double telescopic opening and swing-out rear outriggers for a quick and easy set-up also in narrow areas
- "Load Sensing" proportional boom control
- The "BFC" Best-Flex Cifa supporting system allowing just one man to change delivery pipeline easily, quickly and safely
- Concrete flow rate regulator
- HPG-IF pumping unit with closed circuit and reversal flow: superb performances, high pressures and output, high reliability and easy and reduced maintenance; alternative of 9 inches S valve *alternatively:* F8 pumping system with open circuit: smooth, continuous and easy pumping, combined with high reliability.
- Safety device on opening inspection hatch

Standard equipment

- Proportional radiocontrol system with two speeds for the boom, frequency synthesizer, 8 position keypad and concrete flow rate regulator
- Proportional remote control for emergency with 8 position keypad, concrete flow rate regulator and 30 m cable
- Emergency control pad for pumping unit HPG 1808/1113IF
- Remote controlled electric vibrator placed on the concrete hopper grid
- Centralized lubrication system for pumping unit
- Automatic oil lubrication system for pumping pistons on HPG 1808/1113IF
- Additional manual lubrication system for pumping unit
- Hard plastic outrigger support plates with relative housing
- Rear light on hopper
- Level readers for stabilization control
- Accessories for cleaning and pipes washing

Optionals

- Double thickness concrete pipes, in high resistant steel
- High pressure water pump
- Air compressor for pipeline cleaning
- Centralized lubrication system for placing boom
- Air pipeline for placing boom
- Aluminium hopper covering
- Separated emergency engine kit for independent control of the hopper mixer, concrete pumping unit, boom and water pump

TRUCK-MOUNTED CONCRETE BOOM PUMP

**Placing boom
Pumping unit**

B5RZ 41/36
HPG 1808/1113IF8-IF9
PA 1206F8
PA 1506/909F8

**Driven by
Chassis**

PTO
3 - 4 axle

Pumping unit technical data

MODEL		PA 1206 F8	PA 1506/909 F8	HPG 1808/1113 IF8-IF9
Max. theoretical output	<i>m³/h</i>	120	150/90	179/105
Max. pressure on concrete	<i>bar</i>	53	53/95	76/130
Max. numbers of cycles per min.	<i>nr.</i>	24	30/17	36/21
Conc. cylinders (diam. x stroke)	<i>mm</i>	230x2000	230x2000	230x2000
Concrete hopper capacity	<i>l</i>	550	550	650
Hydraulic circuit		open	open	closed

Placing boom technical data

MODEL		B5RZ 41/36	
Pipeline diameter	<i>mm</i>	125	
Max. vertical reach	<i>m</i>	40,1	
Max. horizontal distance	<i>m</i>	35,8	
Min. unfolding height	<i>m</i>	8,15	
Section numbers		5	
1st section opening angle		90°+2°	
2nd section opening angle		180°	
3rd section opening angle		180°	
4th section opening angle		240°	
5th section opening angle		250°	
Rotating angle		370°	
End hose length	<i>m</i>	4	

Technical data and characteristics subject to modifications.