

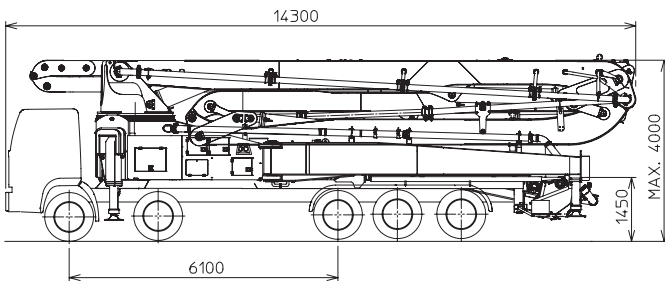
K62H XRZ

TRUCK-MOUNTED CONCRETE BOOM PUMP

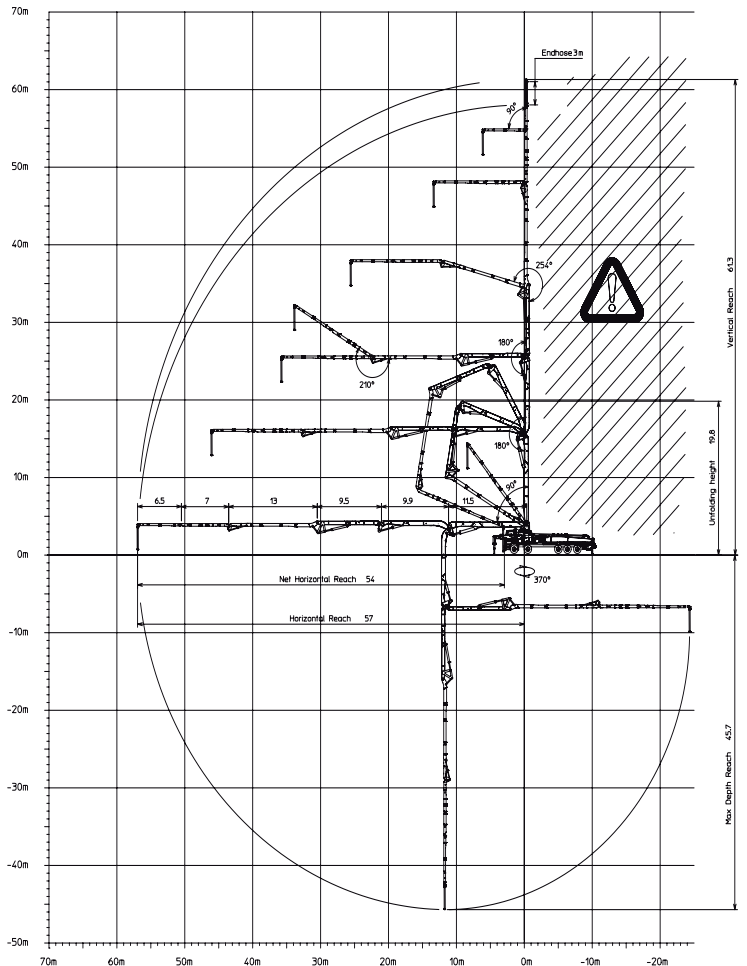
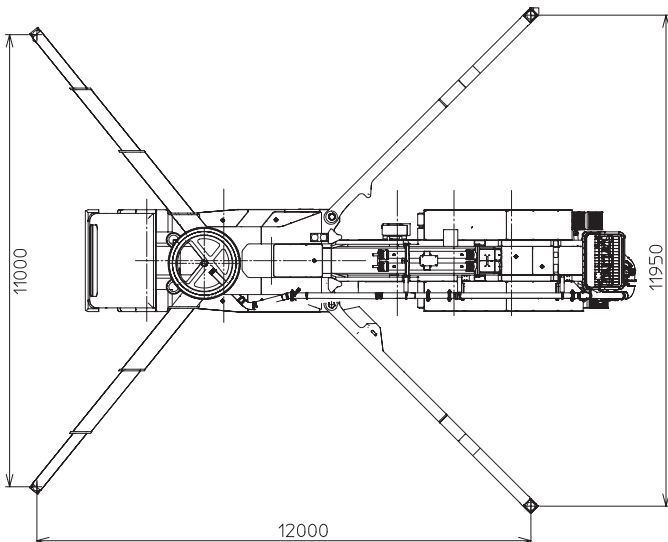
| | |
|--------------|-------------------|
| Placing boom | B5HRZ 62/58 |
| Pumping unit | HPG 1808/1113 IF9 |
| Driven by | PTO |
| Chassis | 5 axles |



Dimensions



Dimensions varying according to truck assembly



K62H XRZ

Main features

- Placing boom B5HRZ 62/58, 6 sections, pipeline diameter 125 mm, "RZ" folding system
- 4th, 5th and 6th boom sections made of light and resistant CIFA CARBOTECH composite material. 1st, 2nd and 3rd sections made of high strength steel
- Assembly on standard 5 axles
- Self-supporting frame, torsion free, FEM designed
- Fully hydraulic outrigger controls on both sides of the truck
- Front "X style" diagonal outriggers with sequence controlled triple telescopic opening and swing-out rear outriggers for a quick and easy set-up
- "Load Sensing" proportional boom control
- Concrete flow rate regulator
- Safety device on opening inspection hatch
- HPG-IF pumping unit with closed circuit and reversal flow: superb performances, high pressures and output, high reliability and easy and reduced maintenance; 9 inches S valve

Standard equipment

- 2 Proportional radio control with two boom movement speed, synthesizer for automatic frequency search, 8 position joystick and concrete flow rate regulator. 20 mt cable
- Electronic stability control and data logger **K-TRONIC®**
- Emergency control pad for pumping unit HPG 1808/1113 IF9
- Remote controlled electric vibrator placed on the concrete hopper grid
- Centralized lubrication system for pumping unit
- Automatic oil lubrication system for pumping pistons on HPG 1808/1113 IF9
- Additional manual lubrication system for pumping unit
- Hard plastic outrigger support plates with housing
- Rear light on hopper and stabilization area
- Level readers for stabilization control
- Accessories for cleaning and pipe washing
- Double thickness concrete pipes, in high resistant steel - CIFA Long Life Pipes
- Aluminium concrete pipeline joints
- Rear camera for facilitate manoeuvre
- Medium pressure water pump (50l/50bar)
- Centralized lubrication system for placing boom
- Separated emergency engine kit for independent control of the hopper mixer, concrete pumping unit, boom and water pump
- Aluminium hopper covering

Optional

- High pressure water pump (28l/120bar)
- Air compressor for pipeline cleaning
- Air pipeline for placing boom

TRUCK-MOUNTED CONCRETE BOOM PUMP

| | |
|---------------------|-------------------|
| Placing boom | B5HRZ 62/58 |
| Pumping unit | HPG 1808/1113 IF9 |
| Driven by | PTO |
| Chassis | 5 axles |

Pumping unit technical data

| Model | | HPG 1808/1113 IF9 |
|-------------------------------------|------------------------|-------------------|
| Max. theoretical output | <i>m³/h</i> | 179/105 |
| Max. pressure on concrete | <i>bar</i> | 76/130 |
| Max. numbers of cycles per min. | <i>nr.</i> | 36/21 |
| Concrete cylinders (diam. x stroke) | <i>mm</i> | 230x2000 |
| Concrete hopper capacity | <i>l</i> | 650 |
| Hydraulic circuit | | closed |

Placing boom technical data

| Model | | B5HRZ 62/58 |
|--|-----------|-------------|
| Pipeline diameter | <i>mm</i> | 125 |
| Max. vertical reach | <i>m</i> | 61,3 |
| Max. horizontal distance (from center of slewing axis) | <i>m</i> | 57 |
| Min. unfolding height | <i>m</i> | 19,8 |
| Section numbers | | 6 |
| 1st section opening angle | | 90° |
| 2nd section opening angle | | 180° |
| 3rd section opening angle | | 180° |
| 4th section opening angle | | 254° |
| 5th section opening angle | | 210° |
| 6th section opening angle | | 90° |
| Rotating angle | | 370° |
| End hose length | <i>m</i> | 3 |

Technical data and characteristics subject to modifications without notice

