

# MAGNUM MK 24.4Z-80

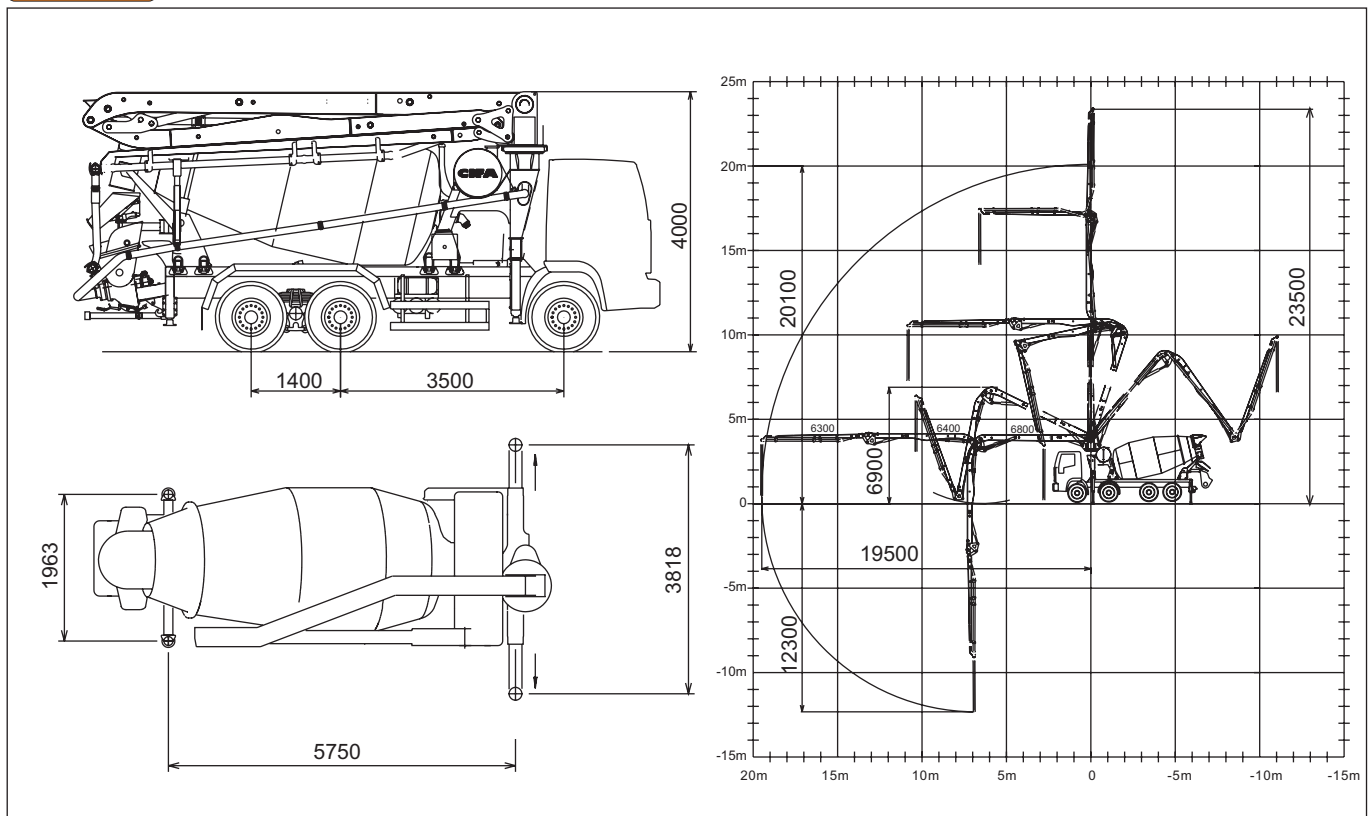
## TRUCK-MIXER PUMP

Placing Boom  
Pumping Unit  
Concrete Mixer  
Driven by  
Chassis

MK 24.4 Z  
PB 607 S7  
RH 80  
P.T.O.  
3 or 4 axles



### Dimensions



# MAGNUM MK 24.4Z-80

## Main features

- Compact and harmonic line, studied for advantageous assembling on 3 or 4 axles chassis
- Ideal loads distribution on the axles to obtain better driving stability
- Self-supporting frame - torsion free FEM designed
- Outriggers fully hydraulic controlled on both machine sides
- High loading and mixing capacity drum and elliptic bottom
- Placing boom MK 24.4 Z, 3 sections, pipeline diameter 100 mm, "Z" folding system
- Proportional boom control allowing the operator to control more placing boom sections simultaneously
- The "BFC" Best-Flex Cifa supporting system allowing just one man to change delivery pipeline easily, quick and safety
- Concrete flow rate regulator
- Quiet pumping with high performances: smooth, continuous and easy movements
- Safety device on opening inspection hatch

## Standard equipment

- Proportional radiocontrol with two speed for the boom, frequency synthesizer, 8 position key and concrete flow rate regulator.
- Proportional remote control for emergency with 8 position key, concrete flow rate regulator and 30 m cable
- Remote controlled vibrator on the concrete hopper grid.
- Centralized lubrication system for pumping unit.
- Automatic lubrication system for pumping pistons by hydraulic oil
- Additional manual lubrication system for pumping unit.
- Hard plastic outrigger support plates with relevant housing.
- Rear light on hopper
- Accessories for cleaning and pipes washing
- Automatic adjustment feeler of truck-mixer discharge into hopper
- Pumping unit with 7 inches "S" shaped valve

## Optionals

- Concrete pipes at double thickness, in high resistant steel
- Continuous rotation of boom
- Cone-shaped discharging chute with end-cone diam. 200 mm
- Further 2 additional section chutes (supplied loose)
- Manual greasing system for reducer, rollers and rolling ring
- Automatic centralized greasing system for boom
- Hydraulic pipeline emergency kit
- High Pressure water pump
- "Ekos-B" device for concrete containment during steep rises

## TRUCK-MIXER PUMP

Placing Boom	MK 24.4 Z
Pumping Unit	PB 607 S7
Concrete Mixer	RH 80
Driven by	P.T.O.
Chassis	3 or 4 axles

## Concrete Mixer Technical Data

MODEL		80
Nominal capacity	$m^3$	7
Drum geometric volume	$l$	13000
Filling ratio	%	54
Maximum drum speed	$1/min$	14
Water tank capacity	$l$	910
Water pump capacity/pressure	$l/1'-bar$	230 / 15

## Pumping Unit Technical Data

MODEL		PB 607 S7
Max. theoretical output	$m^3/h$	61
Max. pressure on concrete	$bar$	71
Max. numbers of cycles per min.	$nr.$	32
Concrete cylinders (diam. x stroke)	$mm$	200x1000
Concrete hopper capacity	$l$	400

## Placing Boom Technical Data

MODEL		MK 24.4 Z
Pipeline diameter	$mm$	100
Max. verticale reach	$m$	23,5
Max. horizontal distance	$m$	19,5
Section number		3
1st section opening angle		108°
2nd section opening angle		184°
3rd section opening angle		271°
Rotation angle		370°
End-hose lenght	$m$	4

Technical data and characteristics subject to modifications without notice